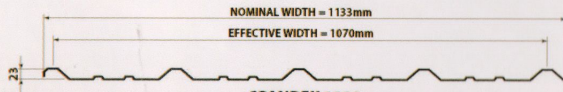


Available in different standard colors:

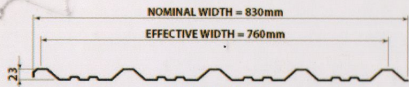


### SPANDEK

(Combines Strength with Lightness, Rigidity and Economy)

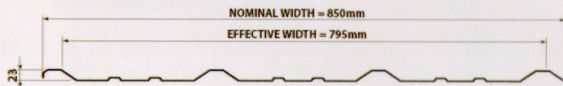


SPANDEK 1220



SPANDEK 915

### DURAWIDE™



### General Product Information:

<b>BASE METAL TYPE:</b> Cold Rolled STEEL: 850kpa (80,000psi) 355kpa (33,000psi)	<b>SALT SPRAY TEST RATING:</b> Class 1000 hours (passed 1000 hours of continuous exposure as per PHG 201: 1993), the only pre-painted Ribbed profile product in the market to have passed class 1000 rating.	<b>RAINFALL CAPACITY:</b> Can withstand 696 mm/hr of Rainfall Intensity for 30 Meter Panel Length at 30° Slope.									
<b>SUBSTRATE:</b> GALVALUME 95™ Aluminum-Zinc alloy-coated steel complying with ASTM A792M. Also available in GALVALBOND™ Lock Forming Quality (PHG 1990: 3004)	<b>AVAILABLE THICKNESS:</b> 0.40mm to 0.80mm	<b>APPLICATIONS:</b> Roofing and Walling									
<b>PAINT COATING:</b> STANDARD Double over-baked epoxy primer and high grade polyester finish.	<b>LENGTH:</b> Longspan	<b>RECOMMENDED FASTENERS:</b> Steel-Teks # 12-24 x 45mm width Haegrease washer Wood-Teks # 12-11 x 65mm width Haegrease washer									
<b>COATING:</b> Top: 30 microns* Bottom: 10 microns* *including primer	<b>WIDTH:</b>										
<b>Optional:</b> Premium Fluorocarbon (PVDF) paint finish on top of corrosion-resistant epoxy primer.	<table border="1"> <thead> <tr> <th>Coil Width</th> <th>Nominal Width</th> <th>Effective Coverage</th> </tr> </thead> <tbody> <tr> <td>915mm</td> <td>830mm</td> <td>760mm</td> </tr> <tr> <td>1220mm</td> <td>1133mm</td> <td>1070mm</td> </tr> </tbody> </table>	Coil Width	Nominal Width	Effective Coverage	915mm	830mm	760mm	1220mm	1133mm	1070mm	
Coil Width	Nominal Width	Effective Coverage									
915mm	830mm	760mm									
1220mm	1133mm	1070mm									



**Years of Excellence and Beyond. Philmetal Products, Inc.** has consistently enjoyed a high reputation for product and service excellence throughout its 30 years of operations making it the top choice among the leading developers, contractors and building professionals in the Philippines.

**Philmetal** revolutionized the long span roofing industry, the first to manufacture the concealed fastening roofing system, the first to introduce the tile-like effect roofing and the first to introduce the highly economical steel decking in the Philippines. With the introduction of on-site rollforming, Philmetal provided the construction industry with continuous long span roofing products unequalled by any local steel company in length and quality, producing the world's longest roofing sheet in a single span. As it goes beyond its 30th year, Philmetal has further strengthened its commitment to provide quality and economical building products to a wide array of construction and building activities, including government infrastructure and mass housing projects.

**Philmetal Products, Inc.** traces its culture of excellence from the Philsteel Group of Companies with the long legacy of manufacturing high quality steel products. Philsteel is the only Filipino steel company that has been recognized by international award-giving bodies for product excellence, including the International Asia Award for Quality (1988, Hong Kong and 1989, London) and the Quality Summit Award in New York, winning the Gold Award for Product Excellence in 2014. Spurred by the vision of producing economical and durable building materials comparable to the world's best, Philsteel established Philmetal Products, Inc. in 1989. Premier Shelter Products was created in the year 2000 to support the Group's sales in areas outside Philmetal's scope, notably in the provinces outside NCR and Metro Cebu.



[www.philmetal.com.ph](http://www.philmetal.com.ph)

@philsteelgroup • @philmetal.com.ph



[www.premiershelter.com.ph](http://www.premiershelter.com.ph)

@philsteelgroup

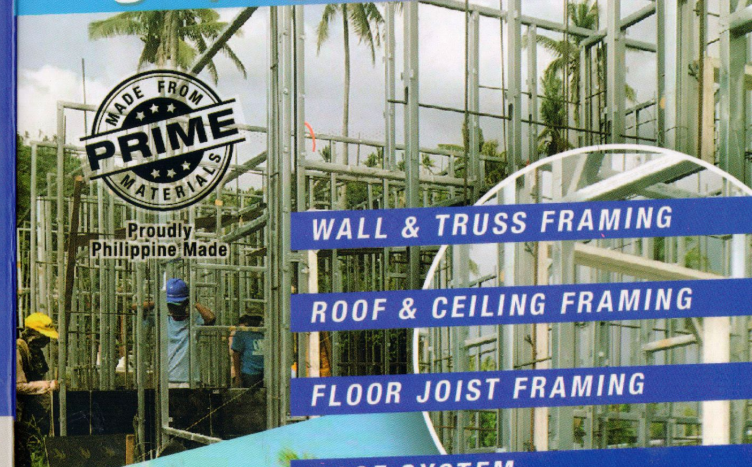


**Shared Services Office:** Philsteel Tower, 140 Amorsolo St., Legazpi Village, Makati City

**Durability. Strength. Resiliency. Affordability. Adaptiveness**  
The best Building Products for the evolving needs of socialized housing

# Galvaframe

## S Y S T E M S

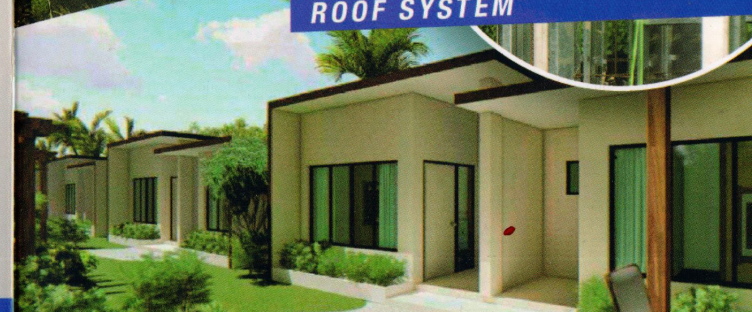


WALL & TRUSS FRAMING

ROOF & CEILING FRAMING

FLOOR JOIST FRAMING

ROOF SYSTEM



[www.philsteel.com.ph](http://www.philsteel.com.ph)

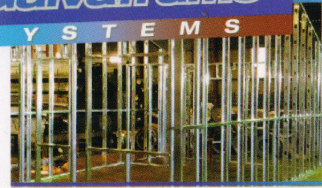
**Galvaframe**  
SYSTEMS



DEPARTMENT OF  
PUBLIC WORKS & HIGHWAYS



ACCREDITATION OF  
INNOVATIVE TECHNOLOGIES  
FOR HOUSING COMMITTEE



**GALVAFRAME SYSTEM** : Accredited by DPWH (Dept. of Public Works and Highways) and AITECH (Accreditation of Innovative Technologies for Housing), the GALVAFRAME SYSTEM is a patented house framing innovation from Philmetal; an innovation that offers a sustainable and more cost-effective solution against conventional frames.

This light gauge steel frame system is recognized for its durability, affordability and easy installation, and significantly reduces construction time. An advanced solution for both drywall and cast-in place concrete construction methods, the system is designed to accommodate effortless installation of fit-out components for electrical, water line and sanitary line, and includes bolt sleeves and angle spacers for consistent concrete thickness. The product's flexibility allows for easy modifications or changes at any point in its lifespan.

The **GALVAFRAME SYSTEM** allows for an intelligent and quick building process without the need for heavy tools or equipment during assembly, specifically for wall and roof framing. Each component of the system can be deployable by hand. Engineered to resist 250km/hr wind speed with its concrete shear wall system and load bearing capacity walls, this innovation addresses the needs and requirements for mass housing projects that require resiliency against typhoons and earthquakes.

*\*Accreditation of Innovative Technologies for Housing or AITECH is an Inter-Agency Committee that reviews and accredits different kinds of technologies, materials and systems.*



**Manufactured Locally. World Class Quality.**  
**Made from prime Galvabond Pure Zinc materials.**  
**Consistent thickness, total coated mass and hardness.**  
**Patented Technology.**

- **STRUCTURAL STABILITY.** Despite its light weight, the Galvaframe System is the strongest steel framing system for residential and mass housing. Made from prime Galvabond Pure Zinc, the framing system complies with the strict Japanese Industrial Standards (JIS). Won't twist, shrink or sag.
- **LONG SERVICE LIFE.** Requires no maintenance or expensive pest control treatments.
- **SAFE.** Steel's inherent quality and strength provides fire resistance; and can withstand typhoons and earthquakes to offer a safer home.
- **DESIGN FLEXIBILITY.** The GALVAFRAME SYSTEM can be used for any design or structure size. Its strength allows larger living areas between load-bearing walls. The GALVAFRAME SYSTEM is compatible with other building materials including bricks and concrete.
- **SIGNIFICANT SAVINGS.** The GALVAFRAME SYSTEM is more cost-effective both in material cost and installation time. With the use of the GALVAFRAME SYSTEM, construction is 5x faster compared to using conventional construction.

**Pre fabricated for easy installation:**

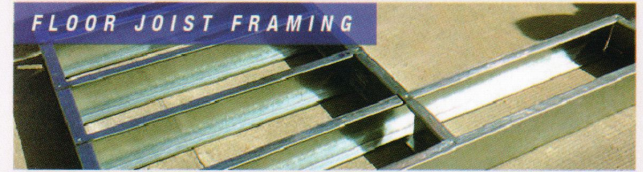
**WALL AND TRUSS FRAMING**



**ROOF & CEILING FRAMING**



**FLOOR JOIST FRAMING**



**ROOF SYSTEM**



**SPANDEK:** The most popular 5-rib roofing profile in the country today, and still unmatched in aesthetics, durability and economy.

**DURAWIDE:** Taking off from the popular Spandek, DURAWIDE offers an even more economical 4-rib option.

- Anti-leak capillary groove provides optimum protection against leaks
- Widest Profile for effective coverage
- Structurally superior and cost-effective solution to roofing requirements
- Site rollforming capability offered by Philmetal and Premier Shelter

